

Online THT AOI AIS303

Application Behind Wave Soldering

- ✓ **Minimalist programming by AI algorithm**
Auto search solder joints and intelligent adjustment parameters to make programming simpler
- ✓ **Three-segment track**
Reduce board entry and exit time to speed up inspection
- ✓ **New version of PLC system**
Strong anti-interference ability and high reliability, movement speed improved greatly




CORE TECHNOLOGY



AI intelligent parameter adjustment

Automatically select solder joints and set parameters without importing CAD, Gerber and other files




Support Mixed model and panel inspection

Auto recognize mixed model and panel inspection by AI positioning algorithm



Support both online/offline programming

On line programming to save line down time



Barcode reading

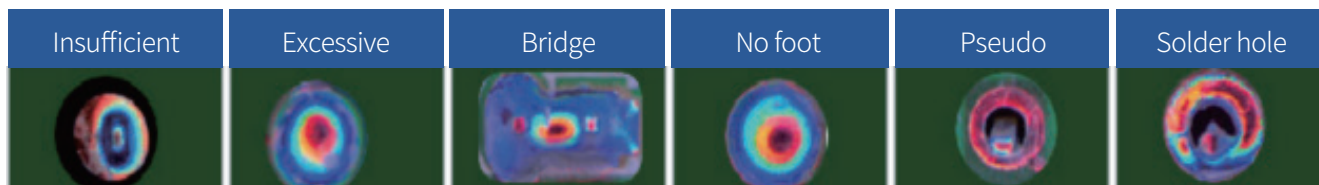
Auto reading of codes (such as code 128, QR codes, Data matrix), original board data is traceable



SPC data analysis

Real-time data recording and analysis, providing evidence for process improvement, and real-time trace data

Detectable defects



Specifications

Category	Item	AIS303	AIS303-L
PCBA	Size	Three section track: 50*50-350*400mm Single section track: 50*50-450*400mm	50*50~550*650mm
	Thickness	0.5mm~6mm	
	Height of elements	TOP:110mm(150mm option), BOT:25mm	
	Processing edge	3mm	
Optical specification	Camera	5MP, color	
	Light source	RGB + W four color integral	
	FOV	49*41mm	
	Resolution	20um	
Inspection-related	Components	Absent, Reversed, Mis-alignment, Broken, Extra, Foreign material, Stained, etc	
	Solder	Insufficient, Excessive, Bridge, No foot, Solder void, etc	
	Other function	Bar code Recognition / QR code Recognition / OCR	
	Mixing boards inspection	Support calling program automatically	
	Algorithm	CNN, Color contrast, Outline recognition, Offset inspection, Template matching, Character comparison, OCR, etc.	
	Speed	0.23sec/FOV	
Software	Operating system	Ubuntu 18.04 LTS 64bit	
	Function	Remote control, remote assistance, CAD file import and user-defined model training	
	Communication method	Standard SMEMA	
	Data output	Autogenerated statistic analysis SPC	
	Special function	Automatic search of elements and quick programming	
Hardware	PC	CPU: intel i5 Display card: NVIDIA GTX1050Ti Memory: 32G DDR, 240G SSD+2T Mechanical Hard Disk Network: 1000M Wired Network Card	
	Display	23.8 inch FHD display	
	Rail width control	High precision lead screw + servo motor	
	Rail width control	Manual/auto	
Appearance /electric	Dimension and weight	(L*H*W)1125*1340*1160mm, net weight:780Kg	(L*H*W)1125*1340*1410mm, net weight:890Kg
	Power supply and power	AC 220V, rated power 520W	
	Air source	0.4-0.6Mpa	
	Work environment	Temperature: 10~45°C, Humidity: 30~85%RH	

*Specifications are subject to change without notice.